

# Rittal – The System.

Faster – better – everywhere.

## Digital Brochure

ENCLOSURES

POWER DISTRIBUTION

CLIMATE CONTROL

IT INFRASTRUCTURE

SOFTWARE & SERVICES

FRIEDHELM LOH GROUP

[www.rittal.ca](http://www.rittal.ca)



# Rittal – The System.

Faster – better – everywhere.



# System Accessories

## Base/Plinth

Flex-Block Base/Plinth System .....	424
TS Base/Plinth .....	426
Base/Plinth .....	433

## Base

Base .....	435
------------	-----

## Walls

Sidewalls .....	450
Partition Walls .....	453
Interconnect Kit .....	458

## Baying Systems

Baying .....	460
--------------	-----

## Doors/Locks

Door Models .....	467
Expansion Accessories for TS Modular Front Design .....	469
Viewing Windows/Operating Panels .....	473
Lock Systems .....	478
Hinges .....	492
Door, External/Internal .....	493

## Roof/Wall Mounting

Roof .....	499
Wall Mounting .....	503

## Interior Fittings

Mounting Plates .....	507
Rail Systems .....	514
Assembly Components .....	533
Component Shelves .....	540
System Lights .....	545
EMC .....	551
Interior Fittings for Areas at Risk of Earthquake .....	554
Grounding .....	555

## Cable Routing

Cable Entry .....	561
Flange Plates .....	564
Cable Gland .....	568
Cable Gland .....	569
Cable Management .....	572
Cable Routing 19" .....	582

## 19" Installation System

Pivoting Frame .....	587
Accessories for Data Rack .....	591
Profile Rails .....	592
Slide Rails .....	596
19" Fittings .....	598
Patch Panels .....	603
Splicing Boxes .....	604

## Human/Machine Interface

Handles .....	605
External Mounting Accessories .....	607
Front Fittings .....	608
Keyboards, Supports and Drawers .....	610
Interfaces .....	617
Signal Pillars .....	619

## Technical Information

RittalXpress .....	622
CE/Grounding/HD/Model Numbers .....	623
Protection Categories .....	624
NEMA .....	625
Approvals/Equipment Grounding Conductor .....	627
Coating/Spray Finish .....	628



## Partition walls

### Partition wall

#### with cable management for TS, TS IT

For side partitioning of bayed TS enclosures.  
Can be fitted without tools or additional hardware.  
With 112 mm holes for cable routing.

**Material:**

- Carbon steel

**Surface finish:**

- Textured paint

**Color:**

- Black

**Supply includes:**

- Grommets for cable routing

Height inches (mm)	Depth inches (mm)	Model No.
79 (2000)	47 (1200)	<b>9971.044</b>
87 (2200)	47 (1200)	<b>9971.048</b>

**Note:**

- Use baying connector 8800.490
- Not suitable for use in conjunction with a baying seal
- Can be fitted and removed without moving the enclosure



### Partition wall, solid

#### for TS, TS IT

For side partitioning of bayed TS enclosures.  
Can be fitted without tools or additional hardware.

**Material:**

- Carbon steel

**Surface finish:**

- Textured paint

**Color:**

- Black

Height inches (mm)	Depth inches (mm)	Model No.
79 (2000)	39 (1000)	<b>9978.378</b>
79 (2000)	41 (1050)	<b>9978.379</b>
79 (2000)	47 (1200)	<b>9978.380</b>
87 (2200)	41 (1050)	<b>9978.383</b>
87 (2200)	47 (1200)	<b>9978.384</b>

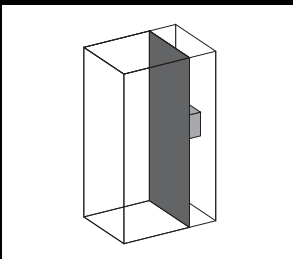
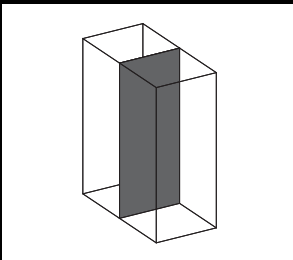
**Note:**

- Use baying connector 8800.490
- Not suitable for use in conjunction with a baying seal
- Can be fitted and removed without moving the enclosure



# Walls

## Partition walls



### Partition wall

#### for TS

To shield individual enclosure cells. The symmetry of the frame system means the partition wall can also be used at the rear. All-round, double edging for stability and to accommodate the seal.

Notches in the corners and half-way up the sides permit the use of angular baying brackets and baying brackets, even with a divider panel fitted. Mounted on the outer mounting level. The inner level remains free for further expansion.

#### Material:

- Carbon steel, 1.5 mm

#### Surface finish:

- Zinc-plated

#### Protection category IP to IEC 60 529:

- IP 54

#### Supply includes:

- Assembly components

#### Note:

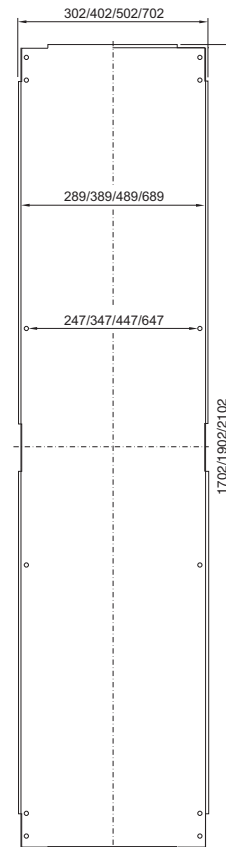
- The divider panel may also be fitted at the rear to allow, e.g. frequency converters for heat dissipation to be installed in a divider panel with the cooling units facing outwards and protected/concealed with a cover (see page 457)



#### Accessories:

- Cover with door, see page 457
- Baying attachment, vertical 8800.470 for enclosures with divider panel fitted, see page 464

For enclosures		Model No.
Height inches (mm)	Depth inches (mm)	
71 (1800)	16 (400)	<b>8609.840</b>
71 (1800)	20 (500)	<b>8609.850</b>
71 (1800)	24 (600)	<b>8609.860</b>
79 (2000)	16 (400)	<b>8609.040</b>
79 (2000)	20 (500)	<b>8609.050</b>
79 (2000)	24 (600)	<b>8609.060</b>
79 (2000)	32 (800)	<b>8609.080</b>
87 (2200)	24 (600)	<b>8609.260</b>



### The partition wall and module plate system

#### More options:

The divider panel cut-outs are individually equipped with module plates for 16-pole or 24-pole connectors, with module plates for cable entry and with solid module plates.

#### Faster assembly:

Usually only some of the total number of connector cut-outs are used. Thanks to the new divider panel technique, the cut-outs do not need to be covered individually. The solid module plate is used instead. The benefit: Fewer plates, fewer screws, less assembly work.

### Partition wall

#### for TS module plates

With cut-outs for the installation of module plates for connectors or for cable entry, and also for the entry of busbar systems and other installed equipment. All-round, double edging for stability and to accommodate the seal. The symmetry of the enclosure frame means divider panels of the appropriate dimensions can also be fitted at the rear.

Mounted on the outer mounting level. In this way the inner level remains free for further enclosure expansion.

#### Material:

- Carbon steel, 2 mm

#### Surface finish:

- Zinc-plated

#### Supply includes:

- Assembly components and M5 x 12 mm multi-tooth screws for mounting the module plates

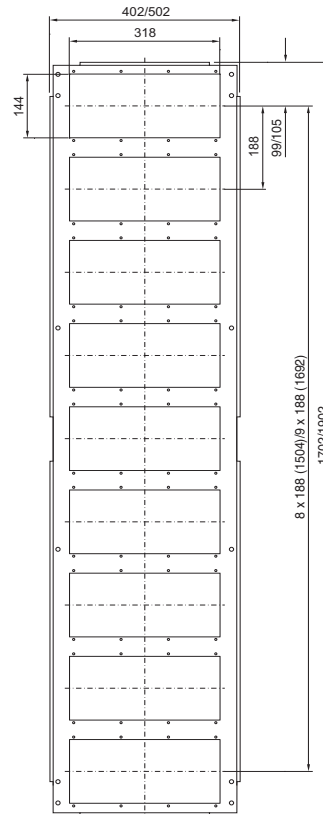
#### Note:

- Notches in the corners and half-way up the sides permit the use of angular baying brackets and baying brackets, even with a divider panel fitted

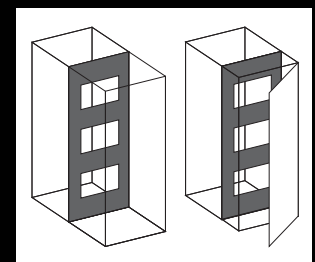
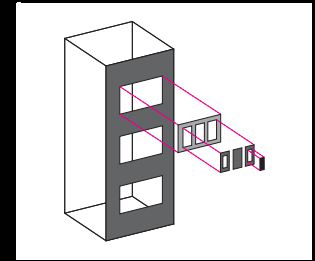


#### Accessories:

- Module plates, see page 456
- Cover with door, see page 457
- Baying attachment 8800.470 for enclosures with divider panel fitted, see page 464



For enclosures		Number of cut-outs	Model No.
Height inches (mm)	Depth inches (mm)		
71 (1800)	20 (500)	9	<b>8609.100</b>
71 (1800)	24 (600)	9	<b>8609.110</b>
79 (2000)	20 (500)	10	<b>8609.120</b>
79 (2000)	24 (600)	10	<b>8609.130</b>



# Walls

## Partition walls

### Module plates

**Material:**  
– Carbon steel, 2 mm

**Surface finish:**  
– Zinc-plated

**Supply includes:**  
– Seal

Version	Cut-outs	Packs of	Model No.
Solid	–	1 pc(s).	<b>8609.160</b>
For 16-pole connectors	4	1 pc(s).	<b>8609.150</b>
For 24-pole connectors	4	1 pc(s).	<b>8609.140</b>
For cable entry	1	1 pc(s).	<b>8609.170</b>
With cable grommet	1	1 pc(s).	<b>8609.390</b>

#### Solid

For blanking unused cut-outs. Easily machined for individual cut-outs.



#### For 16/24-pole connectors

With cut-outs to accommodate connectors. In addition to mounting on divider panels, module plates may also be attached to the 25 mm hole pattern of the enclosure and to the rails of the TS/PS system.



#### + Accessories:

- Adapter, cover plate, see page 456
- Connector gland for connector cut-outs, see page 569
- Connector gland sealing frame and sealing module, see page 570

#### For cable entry

To route pre-assembled cables. Sealed, secure routing is achieved via adjustable angle brackets with inserted foam cable clamp strip. Fixed bracket, punched, for cable clamping.

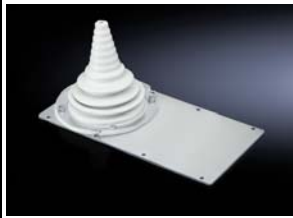


#### + Accessories:

- Cable ties for quick mounting 2597.000, see page 576

#### With cable grommet

For 10 to 65 mm cable diameters. The flexible grommet adapts to the cable's bending radius.



### Adapter

#### for connector cut-outs

To use connectors with varying numbers of poles.

**Material:**  
– Carbon steel

**Surface finish:**  
– Zinc-plated

**Supply includes:**  
– Seal and assembly components

For reduction	Packs of	Model No.
from 24 to 16 poles	5 pc(s).	<b>2479.000</b>
from 24 to 10 poles	5 pc(s).	<b>2480.000</b>
from 24 to 6 poles	5 pc(s).	<b>2481.000</b>
from 16 to 10 poles	5 pc(s).	<b>2401.000</b>
from 16 to 6 poles	5 pc(s).	<b>2402.000</b>



## Partition walls

### Cover plate

#### for connector cut-outs

For unused cut-outs.

#### Material:

- Carbon steel

#### Surface finish:

- Zinc-plated

#### Supply includes:

- Seal and assembly components

For	Packs of	Model No.
24-pole cut-outs	20 pc(s).	<b>2477.000</b>
16-pole cut-outs	20 pc(s).	<b>2478.000</b>



### Cover with door

#### for TS

- To protect and conceal connectors or other installed equipment
- Cable entry optionally from above or below

#### Material:

- Cover: Carbon steel, 1.5 mm
- Door: Carbon steel, 2.0 mm

#### Color:

- RAL 7035

#### Supply includes:

- Cover
- Door with locking rod and double-bit lock insert
- 1 cover plate for top or bottom

For enclosures		Model No.
Height inches (mm)	Depth inches (mm)	
79 (2000)	20 (500)	<b>8609.020</b>
79 (2000)	24(600)	<b>8609.030</b>



#### Accessories:

- Lock inserts, type F, see page 488
- Comfort handle, see page 482
- 180° hinge, see page 492

